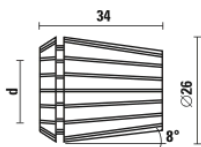


PINZE ER 25 - DIN 6499 SPRING COLLETS ER 25 - DIN 6499

ART. T125



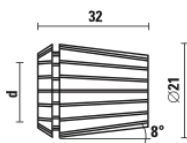
MP
<0,010

Precisione/Precision= 0,01

| Articolo/Item | d |
|---------------|--------------|
| T125.016.N | 1,59 (1/16") |
| T125.020.N | 2 - 1 |
| T125.030.N | 3 - 2 |
| T125.032.N | 3,2 (1/8") |
| T125.040.N | 4 - 3 |
| T125.048.N | 4,8 (3/16") |
| T125.050.N | 5 - 4 |
| T125.060.N | 6 - 5 |
| T125.064.N | 6,4 (1/4") |
| T125.070.N | 7 - 6 |
| T125.079.N | 7,9 (5/16") |
| T125.080.N | 8 - 7 |
| T125.090.N | 9 - 8 |
| T125.095.N | 9,5 (3/8") |
| T125.100.N | 10 - 9 |
| T125.110.N | 11 - 10 |
| T125.120.N | 12 - 11 |
| T125.127.N | 12,7 (1/2") |
| T125.130.N | 13 - 12 |
| T125.140.N | 14 - 13 |
| T125.150.N | 15 - 14 |
| T125.159.N | 15,9 (5/8") |
| T125.160.N | 16 - 15 |

PINZE ER 20 - DIN 6499 SPRING COLLETS ER 20 - DIN 6499

ART. T126



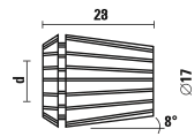
MP
<0,010

Precisione/Precision= 0,01

| Articolo/Item | d |
|---------------|--------------|
| T126.016.N | 1,59 (1/16") |
| T126.030.N | 3 - 2 |
| T126.032.N | 3,2 (1/8") |
| T126.040.N | 4 - 3 |
| T126.050.N | 5 - 4 |
| T126.060.N | 6 - 5 |
| T126.064.N | 6,4 (1/4") |
| T126.070.N | 7 - 6 |
| T126.080.N | 8 - 7 |
| T126.090.N | 9 - 8 |
| T126.095.N | 9,5 (3/8") |
| T126.100.N | 10 - 9 |
| T126.110.N | 11 - 10 |
| T126.120.N | 12 - 11 |
| T126.127.N | 12,7 (1/2") |
| T126.130.N | 13 - 12 |

PINZE ER 16 - DIN 6499 SPRING COLLETS ER 16 - DIN 6499

ART. T127



MP
<0,010

Precisione/Precision= 0,01

| Articolo/Item | d | Articolo/Item | d |
|---------------|--------------|---------------|------------|
| T127.016.N | 1,59 (1/16") | T127.064.N | 6,4 (1/4") |
| T127.020.N | 2 - 1 | T127.070.N | 7 - 6 |
| T127.030.N | 3 - 2 | T127.080.N | 8 - 7 |
| T127.032.N | 3,2 (1/8") | T127.090.N | 9 - 8 |
| T127.040.N | 4 - 3 | T127.095.N | 9,5 (3/8") |
| T127.050.N | 5 - 4 | T127.100.N | 10 - 9 |
| T127.060.N | 6 - 5 | | |

PINZE ER 11 - DIN 6499 SPRING COLLETS ER 11 - DIN 6499

ART. T129



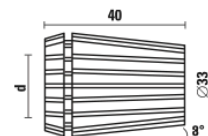
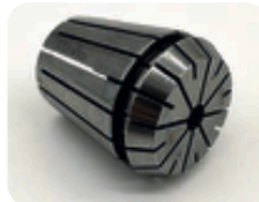
MP
<0,010

Precisione/Precision= 0,01

| Articolo/Item | d | Articolo/Item | d |
|---------------|------------|---------------|-------------|
| T129.010.N | 1-0,5 | T129.045.N | 4,5-4 |
| T129.015.N | 1,5-1 | T129.048.N | 4,8 (3/16") |
| T129.020.N | 2-1,5 | T129.050.N | 5-4,5 |
| T129.025.N | 2,5-2 | T129.055.N | 5,5-5 |
| T129.030.N | 3-2,5 | T129.060.N | 6-5,5 |
| T129.032.N | 3,2 (1/8") | T129.064.N | 6,4 (1/4") |
| T129.035.N | 3,5-3 | T129.065.N | 6,5-6 |
| T129.040.N | 4-3,5 | T129.070.N | 7-6,5 |

PINZE ER 32 - DIN 6499 - ULTRA PRECISE ULTRA PRECISION SPRING COLLETS ER 32- DIN 6499

ART. T119.UP



UP
<0,005

- Consigliate per lavorazioni con alto numero di giri dove è richiesta una elevata precisione
- Diametro nominale
- Si possono usare su tutti i coni portautensili e ghiera standard
- Recommended for high speed RPM where great machining precision is required
- Nominal diameter
- To be used on all types of toolholders and standard nuts

| Articolo/Item | d | Articolo/Item | d |
|---------------|------|---------------|------|
| T119.030.NUP | ∅ 3 | T119.120.NUP | ∅ 12 |
| T119.040.NUP | ∅ 4 | T119.140.NUP | ∅ 14 |
| T119.060.NUP | ∅ 6 | T119.160.NUP | ∅ 16 |
| T119.080.NUP | ∅ 8 | T119.180.NUP | ∅ 18 |
| T119.100.NUP | ∅ 10 | T119.200.NUP | ∅ 20 |